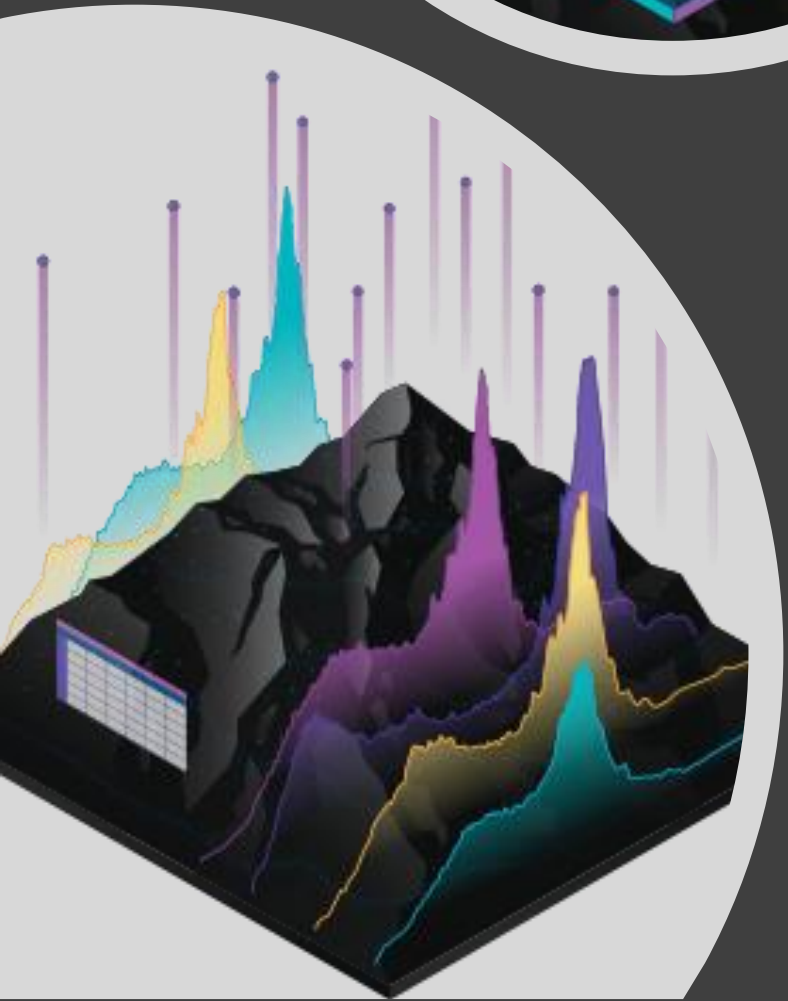


Each step up  
the pyramid  
answers  
questions  
about and  
**adds value**  
to the initial data.



DATA > INFORMATION

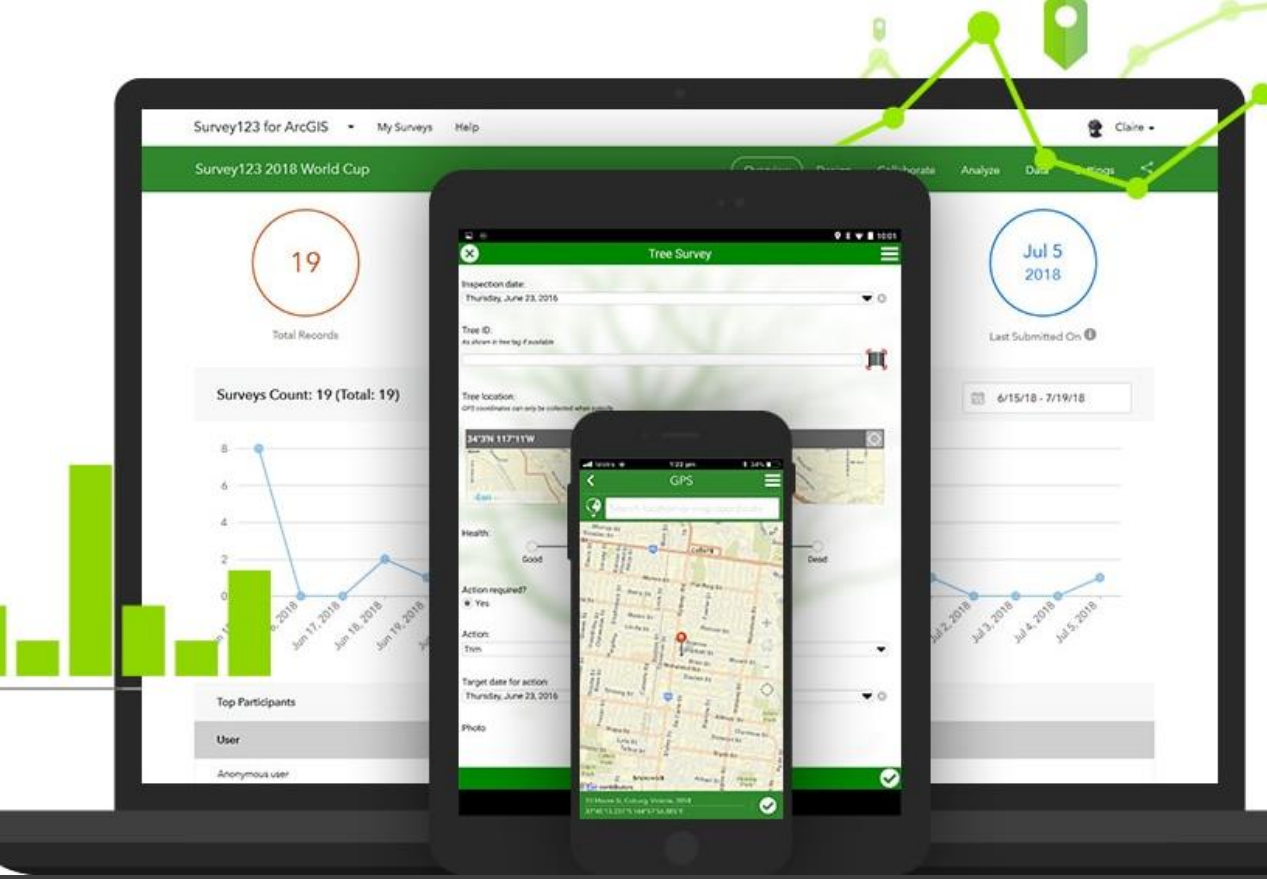
INFORMATION > KNOWLEDGE

KNOWLEDGE > WISDOM









GENERATE DATA





# Tahoe Open Data

mapping tools and datasets

The goal of the Tahoe Open Data site is to maintain and promote the use of a regional geographic data warehouse for the Tahoe Basin and to assist in the development of shared geographic and tabular data and automated systems which use that data. GIS is the industry standard for mapping geographic information and this tool allows for broader integration and comparison, improved analysis, and multilayer functionality. The use of GIS helps the organizations around Tahoe use the best information for planning and monitoring.

[Disclaimer](#)

[Explore Data Categories](#)

# Explore Data Categories



All



Wildlife



Soils and Hydrology



Parcels



Transportation



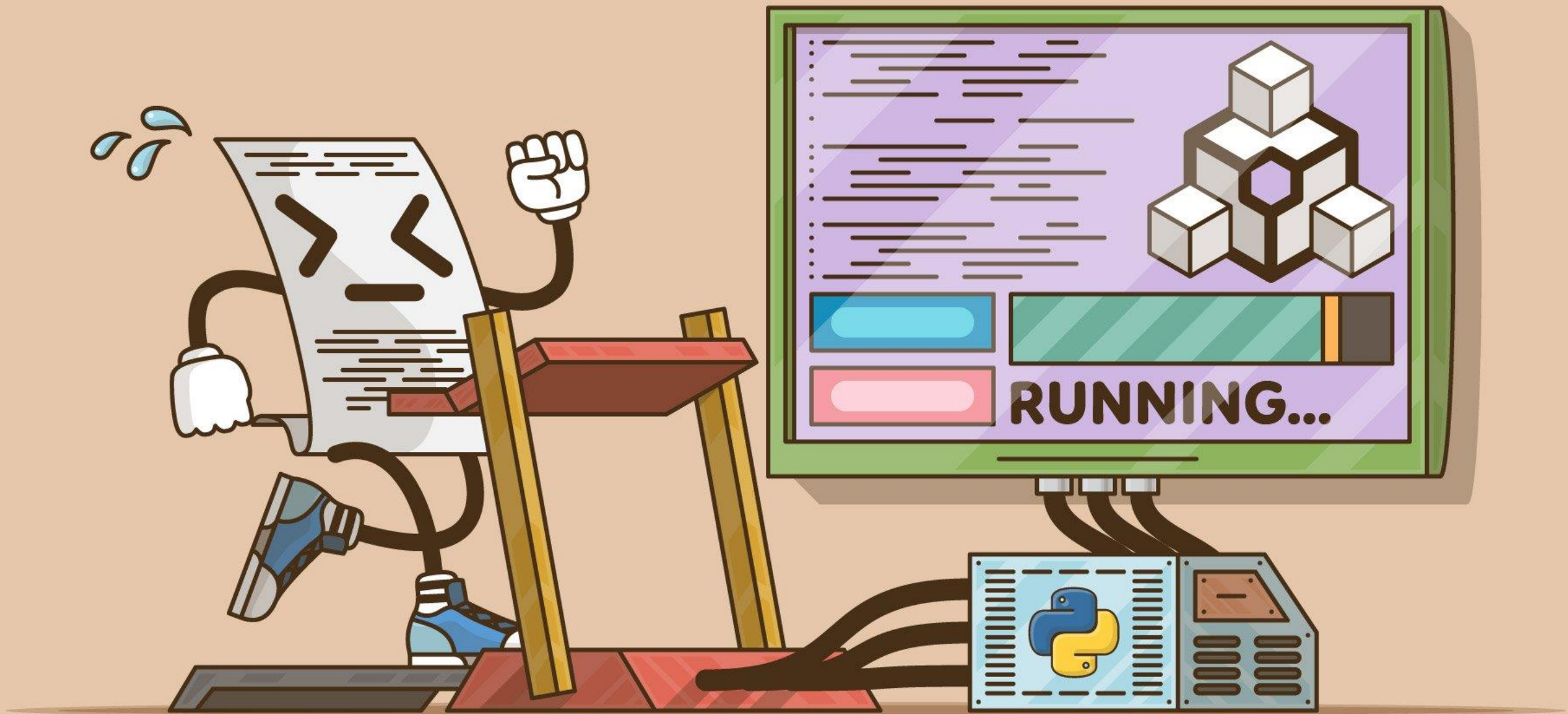
Boundaries



Monitoring



Recreation



Real Python



# Lake Tahoe INFO

Connecting people with information to improve decision making and sustain investments in the Lake Tahoe Basin.



[LAKE CLARITY TRACKER](#)



[MONITORING DASHBOARD](#)



[PARCEL TRACKER](#)



[SUSTAINABILITY DASHBOARD](#)



[THRESHOLD DASHBOARD](#)



[TRANSPORTATION TRACKER](#)

[Explore More](#) ▼

Mooring Registration is live. [Click here to register.](#)



10/11/2019

45 parcels were updated in the Parcel Tracker



10/9/2019

2 EIP Projects were updated





APN: 1318-26-101-011

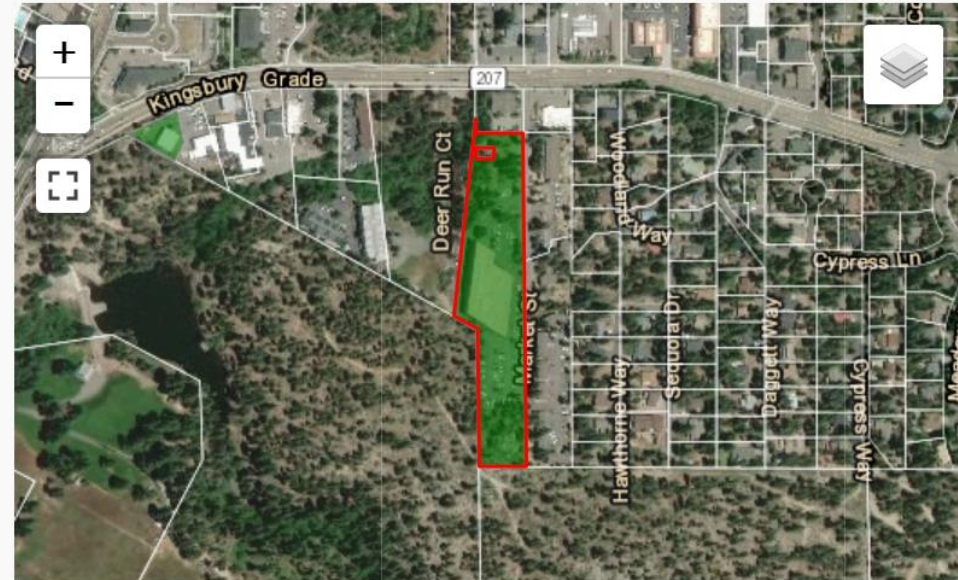
View Parcel Fact Sheet

### PARCEL OVERVIEW

- Address 128 MARKET ST, KINGSBURY, NV 89449
- Jurisdiction Douglas County, NV (DGCO)
- Parcel Size 204,296 ft<sup>2</sup> (verified)
- Parcel Notes Previous APN: 007-180-90
- Local Plan SOUTH SHORE AREA PLAN
- Fire District TAHOE DOUGLAS FPD
- Watershed Edgewood Creek
  - HRA South Stateline
- Retired From Development No

Request Updated Information

### MAP



### BMP COMPLIANCE STATUS

View this Parcel in the [BMP Database](#).

Print Certificate

- BMP Certificate Issued? Yes
- BMP Certificate Issued Date 10/10/2008

### DEED RESTRICTIONS

The Parcel Tracker has no record of Deed Restrictions on this parcel.







Address or APN



**Parcels**

Parcels

**Scenic Attainment**

Scenic Roadway Travel Route

- Attainment
- Non-attainment

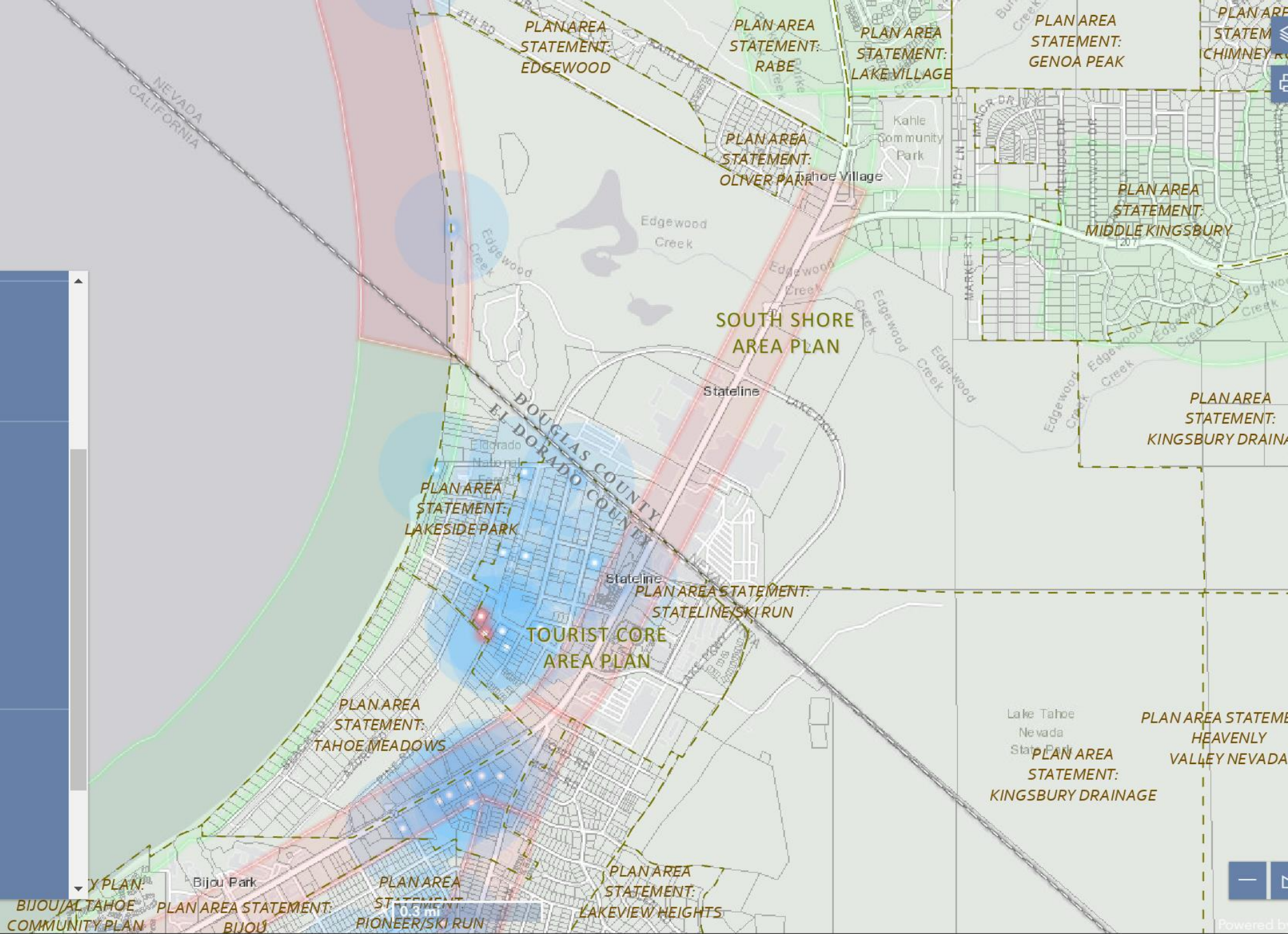
Scenic Shoreline Travel Route

- Attainment
- Non-attainment

**Source Water Resources**

Source Water

- ACTIVE
- BACKUP
- CONTINGENCY





# Web Maps

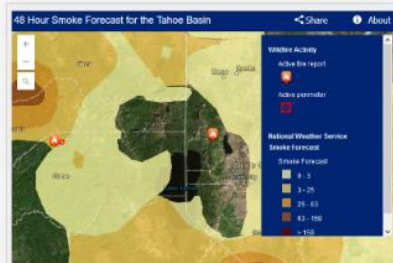
Web Applications provide simple access to spatial information and tools. We recommend exploring the apps below for helping engage around specific goals and initiatives.



## Map Maker

The TRPA Map Maker is public facing interactive web map that allows users to explore some of

[Explore](#)



## 48 Hour Smoke Forecast for the Tahoe Basin

A time aware showing a 48 hour smoke forecast map for the Tahoe Basin and surrounding region. It is

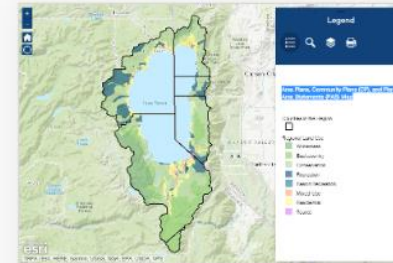
[Explore](#)



## Tahoe Best Management Practices (BMP) Mapping

The BMP Map Viewer can be used to view layers; turn on or off APN Labels, Catchments, and uploaded

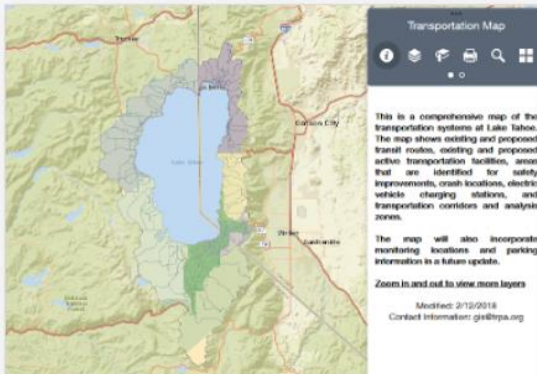
[Explore](#)



## Area Plans, Community Plans (CP), and Plan Area

Use this map to explore zoning information for the Lake Tahoe Region. Zoom in and click on

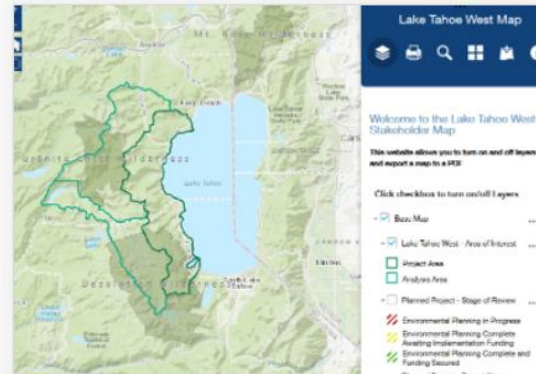
[Explore](#)



## TRPA Transportation Map

Transportation systems at Lake Tahoe. It shows existing\proposed transit routes, existing\proposed active transportation facilities, areas identified for

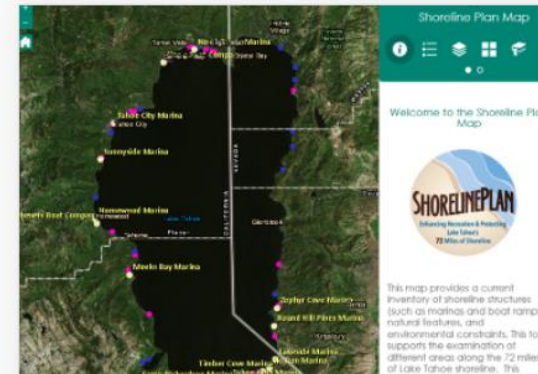
[Explore](#)



## Lake Tahoe West Stakeholder Map

The Lake Tahoe West Map allows stakeholders to turn on and off spatial data to view for planning purposes. Users can also search projects, switch

[Explore](#)



## Shoreline Plan Map

This map provides a current inventory of shoreline structures (such as marinas and boat ramps), natural features, and environmental constraints. This tool

[Explore](#)





CITIES, REIMAGINED

# Location Intelligence Software for Smart Cities

UrbanFootprint streamlines urban planning and mobility decisions with actionable data for all U.S. locations. Map, measure, and analyze the future of place.

[BOOK A DEMO](#)

This website stores cookies on your computer. These cookies are used to improve your website experience and provide more personalized services to you, both on this website and through other media. To find out more about the cookies we use, see our [Privacy Policy](#).

Accept

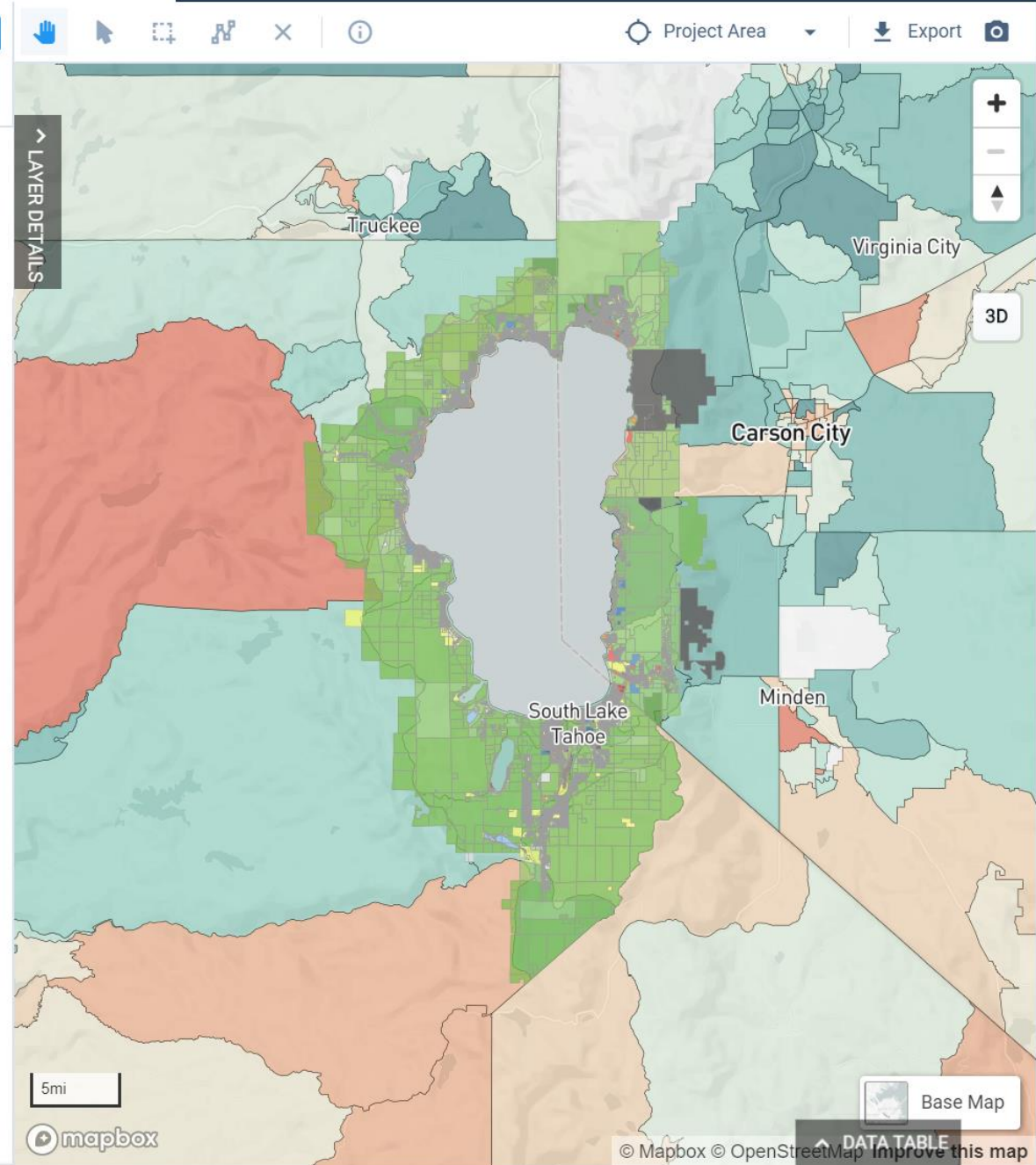
Decline





### Layers

- 3 Layers
- Project Area
- Base Canvas
- Census Planning Database (2018)



### Analysis Modules

- Land Consumption Ready to run
- Energy Use Ready to run
- Water Use Ready to run
- Walk Accessibility Ready to run
- Transit Accessibility Ready to run
- Transportation Ready to run
- Emissions Ready to run
- Household Costs Ready to run
- Risk and Resilience Ready to run
- Conservation Ready to run





# On-Demand Cloud Computing and Visualization of Climate and Remote Sensing Data

Analyze and interact with climate and earth observations  
for decision support related to drought, water use,  
agricultural, wildfire, and ecology

[LAUNCH THE WEB APPLICATION](#)



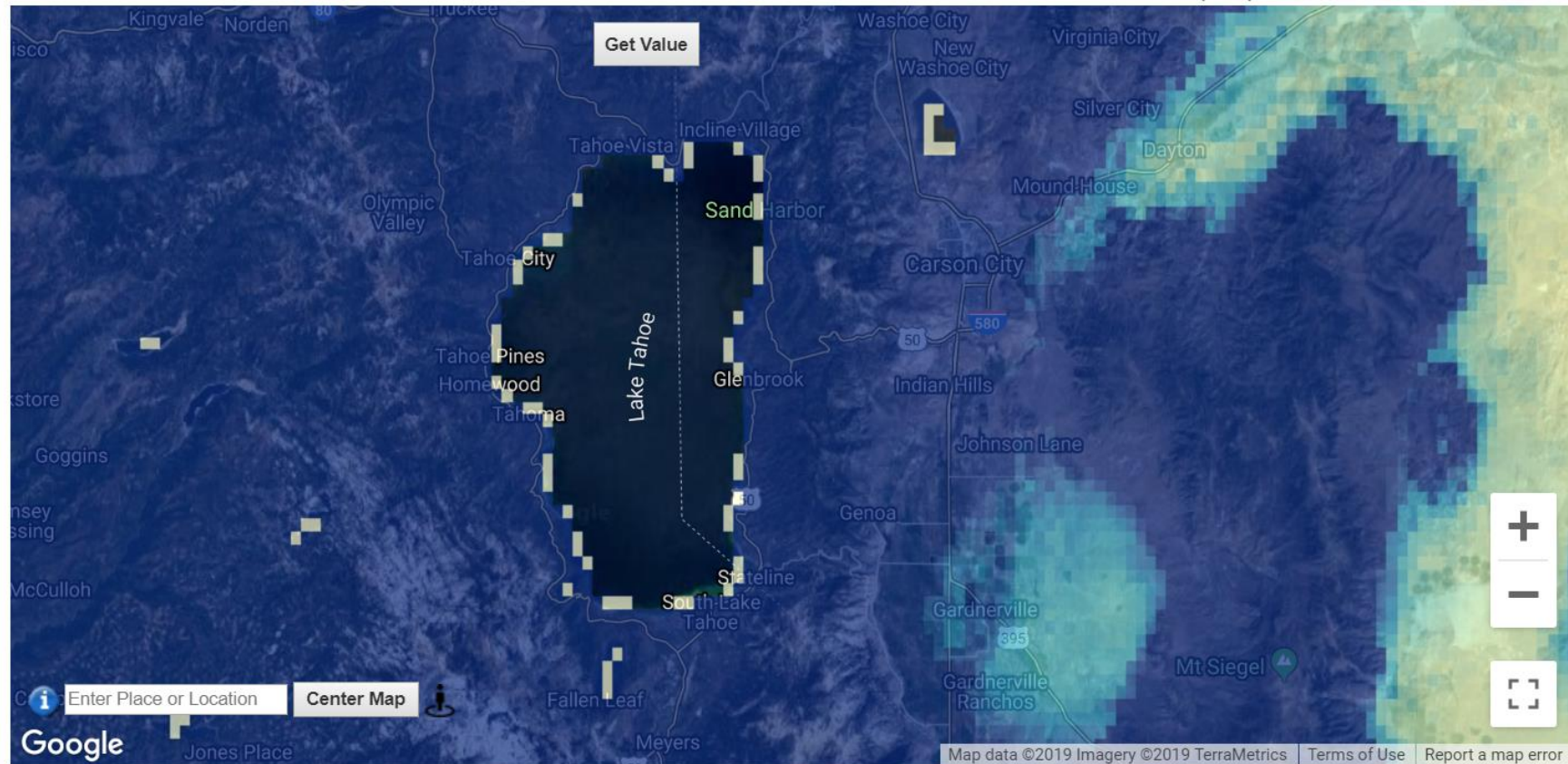
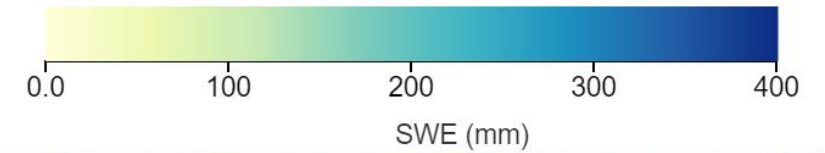
MENU Map

Colors ▾ Map ▾ Layers ▾ Masking ▾ Download ▾

Link Reset

## SWE (SNODAS)

2018-12-01 to 2019-02-28, Total



Generated by ClimateEngine.org

Make Map

Make Graph



GET MAP LAYER

### Variable ?

Type:

Climate ▾

Dataset: ?

SNODAS ▾

Variable: ?

Snow Water Equivalent (SWE) ▾

Units: millimeters ▾

Computation Resolution (Scale): ?

1000 m (1/120-deg)

### Processing ?

Statistic (over day range): ?

Total ▾

Calculation: ?

Values ▾

### Time Period ?

Period of Record: 2003-10-01 to 2019-10-13

Season:

Last DJF (Dec-Feb) ▾

Start Date: 2018-12-01

End Date: 2019-02-28









50 Years From Now